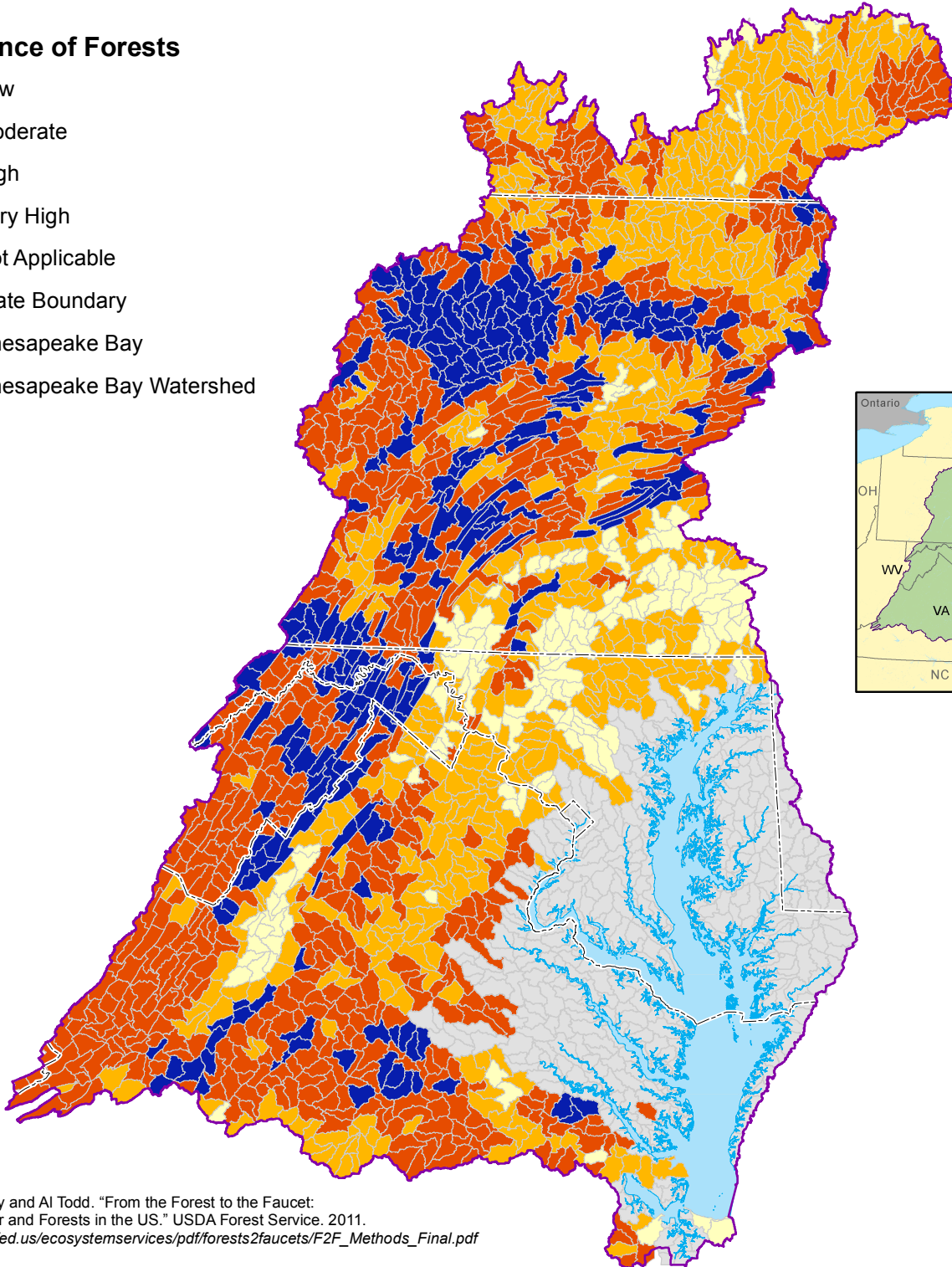


# Importance of Forest to Surface Drinking Water Supplies



## Importance of Forests

- Low
- Moderate
- High
- Very High
- Not Applicable
- State Boundary
- Chesapeake Bay
- Chesapeake Bay Watershed



Weidner, Emily and Al Todd. "From the Forest to the Faucet: Drinking Water and Forests in the US." USDA Forest Service. 2011.  
[http://www.fs.fed.us/ecosystemservices/pdf/forests2faucets/F2F\\_Methods\\_Final.pdf](http://www.fs.fed.us/ecosystemservices/pdf/forests2faucets/F2F_Methods_Final.pdf)

Data Sources: USDA Forest Service  
 For more information, visit [www.chesapeakebay.net](http://www.chesapeakebay.net)  
 Disclaimer: [www.chesapeakebay.net/termsfuse.htm](http://www.chesapeakebay.net/termsfuse.htm)

