



## REQUEST FOR PROPOSALS

Uhler Natural Resources Management Area/Bowie State University  
Wetland Delineation, Assessment and Management Plan

### OVERVIEW

The Alliance for the Chesapeake Bay (Alliance), in partnership with Department of Natural Resources (DNR) Maryland Park Service (MPS) and Bowie State University (BSU), seek proposals for a wetland delineation, assessment and management plan for the Uhler Natural Resources Management Area and a portion of Bowie State University properties.

### SITE LOCATION AND DETAILS

**Coordinates:** 39.02369, -76.7576

**Approximate Address:** 14000 Jericho Park Rd, Bowie, MD 20715

Immediately north and northeast of the main BSU campus is approximately 255 acres of mixed ownership parcels. This area is primarily composed of forests and wetlands. Approximately 86 acres are under management by BSU, and 169 acres are managed by the DNR MPS as the Uhler Natural Resources Management Area (UNRMA). UNRMA is part of the Southern Maryland Regional Complex within the Maryland Park System, which includes parks in Prince George's, Charles, Calvert, and St. Mary's Counties.

The Alliance for the Chesapeake Bay has received a grant through the National Fish and Wildlife Service's Chesapeake WILD program to facilitate a two-year process between BSU and the DNR MPS with the goal of developing a joint and comprehensive natural resources management plan for the area.

The plan has the following priority objectives:

- Revitalize existing trails and related infrastructure for improved accessibility and recreation.
- Manage the forests and wetlands to improve ecosystem health and function.
- Identify research and outdoor classroom opportunities for BSU faculty and students educational purposes.

The natural resources management plan will be made up of three primary components: a forest management plan; a wetland delineation, assessment, and management plan; and a trail inventory and recreation plan. The forest management plan is near completion and the trail inventory and recreation plan will be bid out



and completed through a separate process. A detailed tree survey was completed as part of the forest management plan and will be shared with the successful bidder. This request for proposals is exclusively for the wetland delineation, assessment, and management plan.

Environmental reviews by both Maryland Department of Natural Resources and the U.S. Fish and Wildlife Service to determine the presence of, or potential for, the presence of state and federally protected threatened or endangered plants on the subject site have already been completed. Completed reviews will be shared with the successful bidder.

A map of the project boundary as well as the forest stand delineation by soil type are included in the request for proposals. Additional map data may be found in [Google Maps](#).

## **SCOPE OF WORK**

All tasks in the scope of work must be completed by October 1, 2025.

### **Nontidal Wetland Delineation**

- Desktop and Background Research:
  - Conduct desktop research to obtain and analyze publicly available geospatial data including topography: forest cover, National Wetlands Inventory, Maryland Tier II High Quality Waters, Wetlands of Special State Concern, floodplains and historical land use.
  - Delineate drainage areas on subject property.
- Conduct field delineation of vegetated wetlands and unvegetated waters on the subject property according to methodologies specified in the 1987 Corps of Engineers Wetlands Delineation Manual (Environmental Laboratory, 1987), as well as the Regional Supplement to the Corps of Engineers Wetland Delineation Manual: Atlantic and Gulf Coastal Plain Region (Version 2.0) (USACE, 2010).

### **Wetland/Waters Classification**

- Classify wetlands and waters using the Classification of Wetlands and Deepwater Habitats of the United States (Cowardin et al., 1979).

### **Wetland Survey**

- Establish survey control and conduct survey of flagged wetland/waters boundaries using survey methods currently acceptable to the Corps of Engineers.
- Prepare mapping of existing wetlands showing surveyed limits and classifications.



### **Wetland Regulatory Concurrence**

- Coordinate with the U.S. Army Corps of Engineers (USACE) and Maryland Department of the Environment (MDE) to request a site visit/project review to obtain concurrence of the wetland delineation.
- Adjust boundaries and classifications of wetland/waters as necessary in response to regulatory comments.

### **Wetland Functional Assessment**

- Evaluate the condition of identified wetlands by comparing them to reference wetlands of the same type using Hydrogeomorphic (HGM) Approach. The approach is based on structural measures or indicators that are associated with one or more ecosystem functions within three major categories: (1) hydrologic, (2) biogeochemical, and (3) physical habitat.
- Identify reference wetlands of the same type as subject wetlands.
- Develop index values and provide a narrative describing each function of subject wetlands relative to the reference wetlands.
- Determine impairments/stressors of subject wetlands.

### **Wetland Management Plan**

- Provide concept-level proposed restoration and management activities to address identified stressors/impairments and to protect/enhance/restore subject wetlands and waters to their most natural and undisturbed state. Management activities may include large-scale, long-term efforts as well as shorter-term, discrete actions.

## **DELIVERABLES**

- **Report:**
  - Comprehensive Description of Existing Conditions.
  - Methods.
  - Wetland and Waters Classification.
  - Documentation of regulatory concurrence from the USACE and MDE.
- **Wetland Functional Assessment:**
  - Determine condition/health of subject wetlands relative to reference wetlands of the same type.
  - Identify and discuss stressors/impairments.
- **Wetland Management Plan:**
  - Analysis of resources and regulations that may limit/preclude future projects/disturbance:
    - Wetlands/Waters/Buffers/Floodplains
    - Maryland Tier II Waters
    - Wetlands of Special State Concern

- Steep Slopes
  - Highly Erodible Soils
  - Presence of protected plant or animal species or habitats
- Develop recommendations to protect/enhance/restore wetlands and waters.
- Concept level cost estimate to implement restoration/management activities.
- **Mapping:**
  - Existing conditions mapping: parcel boundaries, topography, tree line, existing features, roadways and infrastructure.
  - Field located boundaries of wetlands and waters with classifications.
  - Location of wetland buffers and limits of FEMA 100 year floodplain.
  - Locations/descriptions of stressors/impairments.
  - Concept level proposed short and long-term restoration/management activities.
  - Final GIS data files (i.e., shapefiles of boundaries).
- **Other:**
  - Attend one virtual partner meeting to share initial findings of the assessment and receive feedback.

## PROPOSAL TIMELINE AND INSTRUCTIONS

Proposals are due by Sunday, June 15 at 11:59 PM in .pdf format via email. Send your proposals to Jenny McGarvey, Capacity Building Initiative Director, [jmcgarvey@allianceforthebay.org](mailto:jmcgarvey@allianceforthebay.org). The Alliance anticipates notifying bidders of bid selection by Monday, June 30.

Please provide the following items in your proposal:

- An itemized budget that includes the cost for each numbered task in the Scope of Work section above. **The maximum budget for this project is \$75,000.**
- A description of services to be provided in relation to the items in the Scope of Work section above.
- A basic, estimated project timeline with start, stop, and key milestone dates (assuming notice to proceed on July 1, 2025).

The following items are encouraged but not required to be included:

- Bios of the company and key project personnel.
- Examples of similar projects completed in the last five years.
- References or other information you feel will strengthen your proposal.



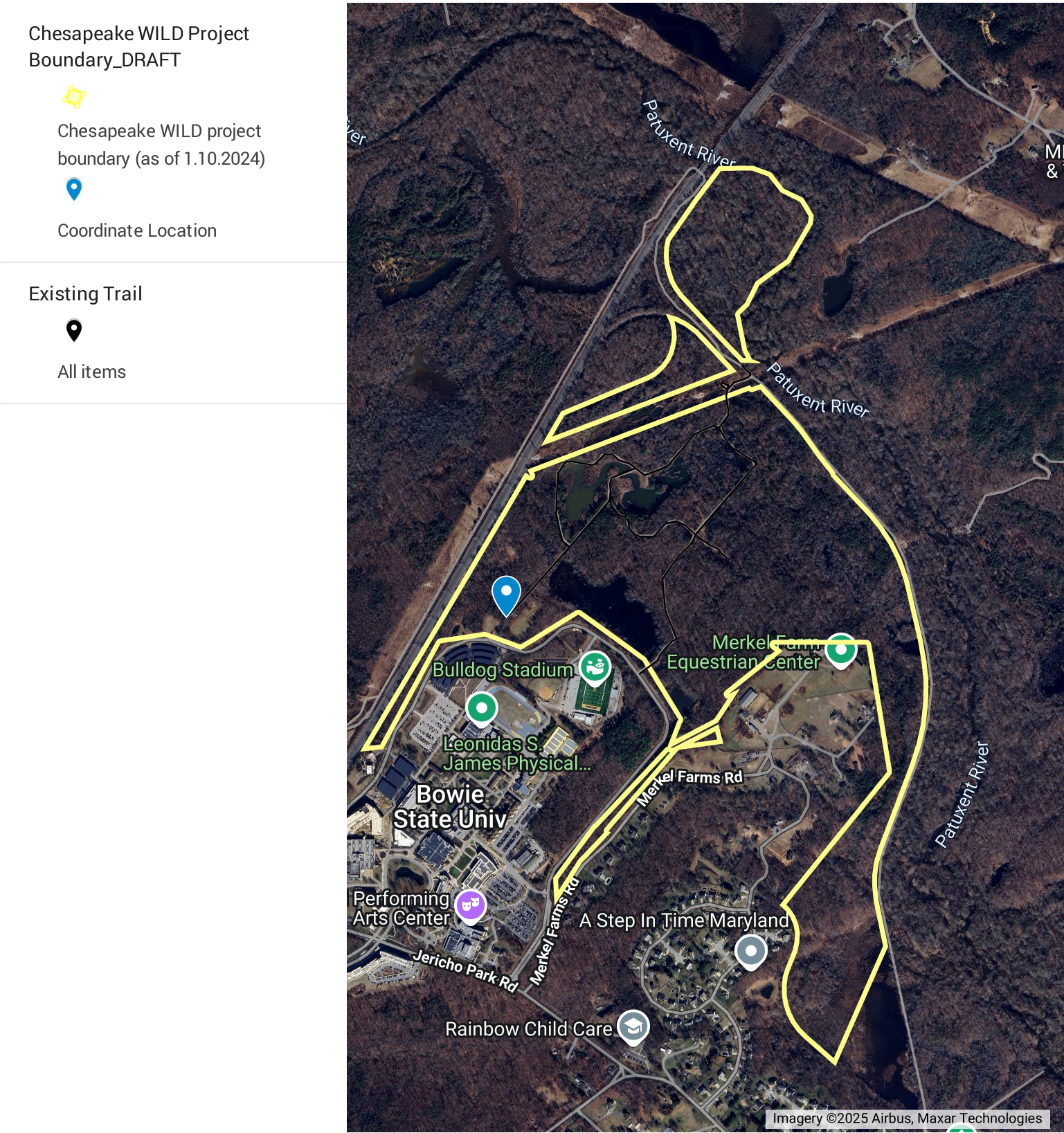
Each proposal will be reviewed and evaluated based upon cost-effectiveness, demonstrated prior experience/performance (if available), project timeline, and prior references (if available).

The successful bidder will be subject to completing the scope of work in compliance with all applicable laws and “contractor flow down” terms and conditions associated with the funding source(s), including the National Fish & Wildlife Foundation, the U.S. Department of Agriculture, and the U.S. Fish and Wildlife Service.

Site visits can be accommodated upon request. Contact Jenny McGarvey at [jmcgarvey@allianceforthebay.org](mailto:jmcgarvey@allianceforthebay.org) to schedule a site visit. If you have any questions, please direct them to Jenny McGarvey. Relevant questions and answers will be collected and shared anonymously with all bidders.



# Bowie State University/Uhler Natural Resources Management Area





# Uhler Tract Soil Stands



Stand 3: Reclaimed Gravel Pits



Stand 2: Wetland



Stand 1: Sandy Soils

